



Elective Home Education (EHE)

Annual Report 2016/17

CONTENTS

The Elective Home Education Team

Developments in 2016/17

Case summary 2016/17

Cases by Gender

Cases by Hub

Case by National Curriculum Year

Cases with Statement of Educational Needs/Education health plan

Attendance and Exclusion History

Cases by Ethnicity

Reasons for Elective Home Education

Pre EHE Base Secondary Schools

New and Closed Cases

The Elective Home Education Team

The Elective Home Education (EHE) Team is staffed by one FTE Lead EHE Officer and three-part time EHE Link Workers (working the equivalent of one FTE).

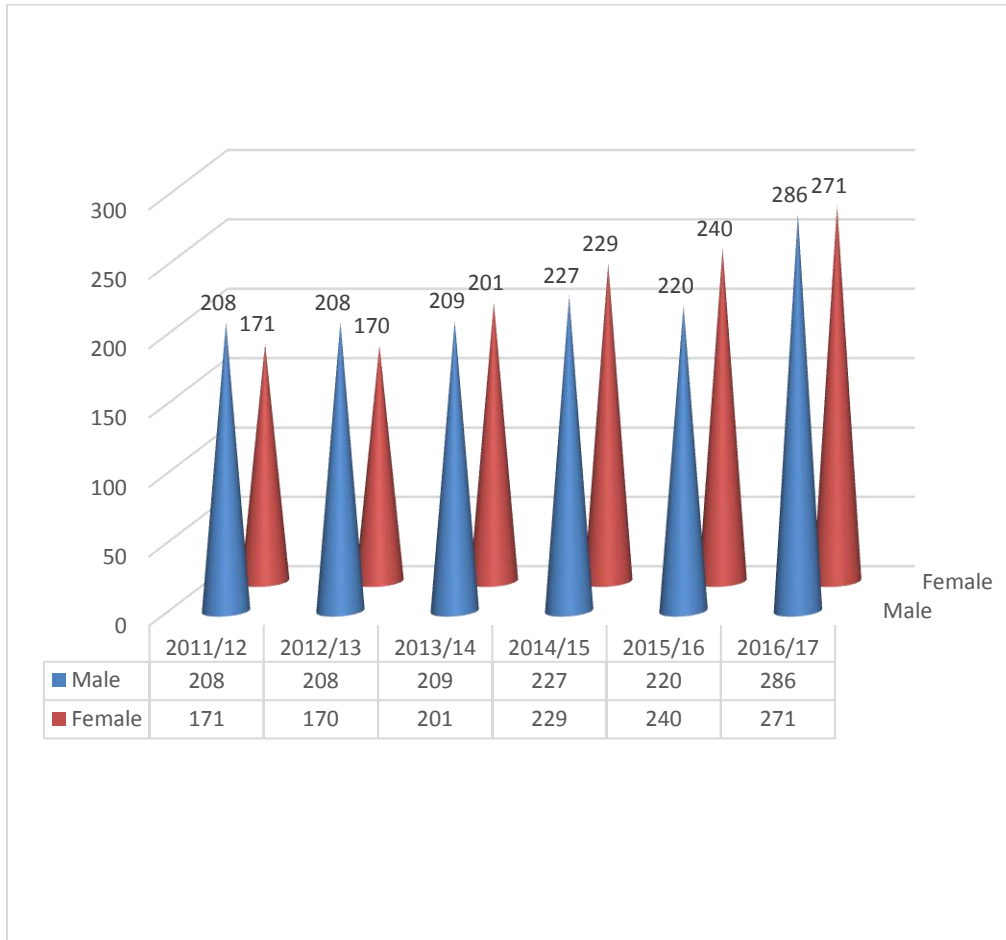
Developments in 2016/17

- A series of successful meetings with Abingdon and Witney College, Oxford and Banbury College have taken place. Information has been shared to facilitate good practice and to promote the integration of 14-16 yrs. old's into college placements. Safeguarding has been a priority in discussions, so that the process of removal from school roll is monitored carefully.
- We have liaised with Youth Engagement and Opportunities team to ensure NEET information is communicated to Year 11's. Destinations post year 11 EHE students are sought and tracked. This continues to be ongoing and information is now shared earlier in the year to ensure students have the correct information and time to plan and make informed choices.
- We continue to work closely with the Community Pediatric Service and Health Nurses.

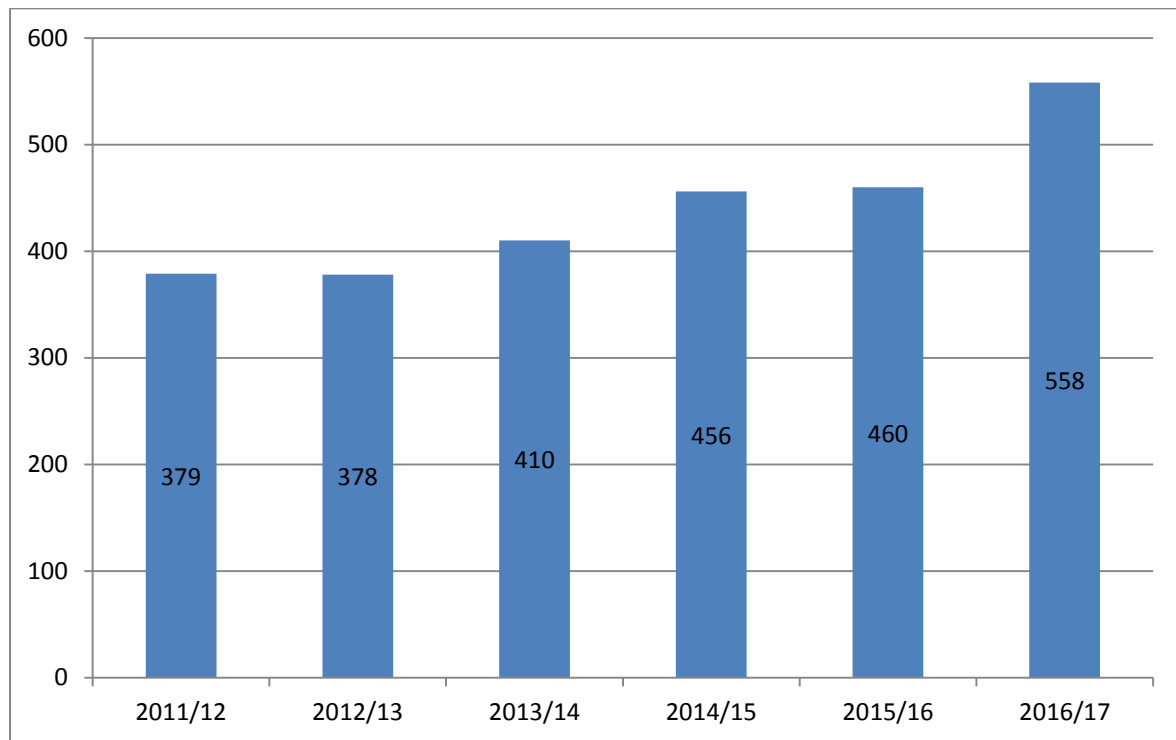
Case Summary

	2015/16	2016/17
Total Registered	460	558
New	167	228
Closed	156	117
Returned to school	90	70
Gypsy, Roma and Traveller (GRT)*	29	32
Referred to County Attendance Team for a School Attendance Order	2	3
Statements/EHCP	28	23
Record of Social Care involvement (open/closed)	177	302
Young Carers	22	23
Local Authority Care	7	4

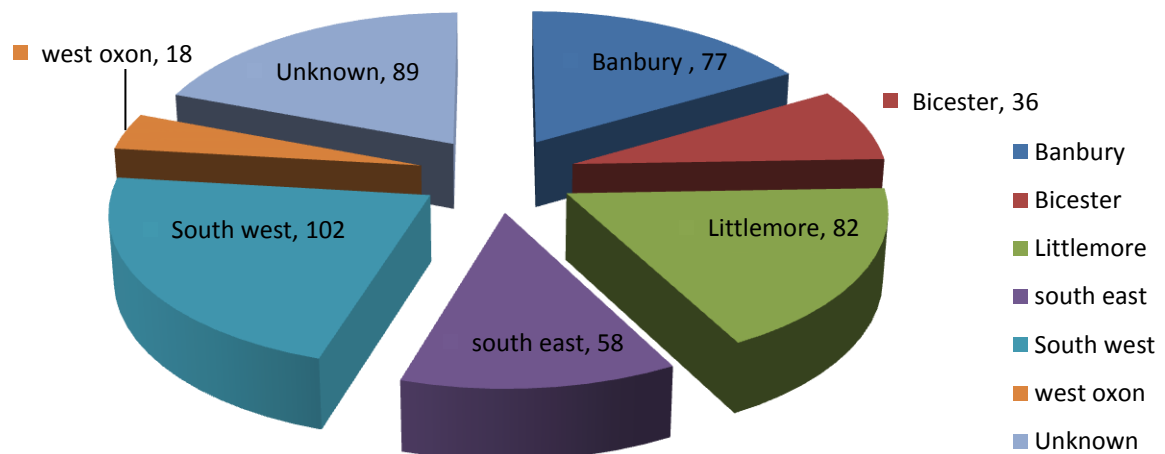
Cases by Gender



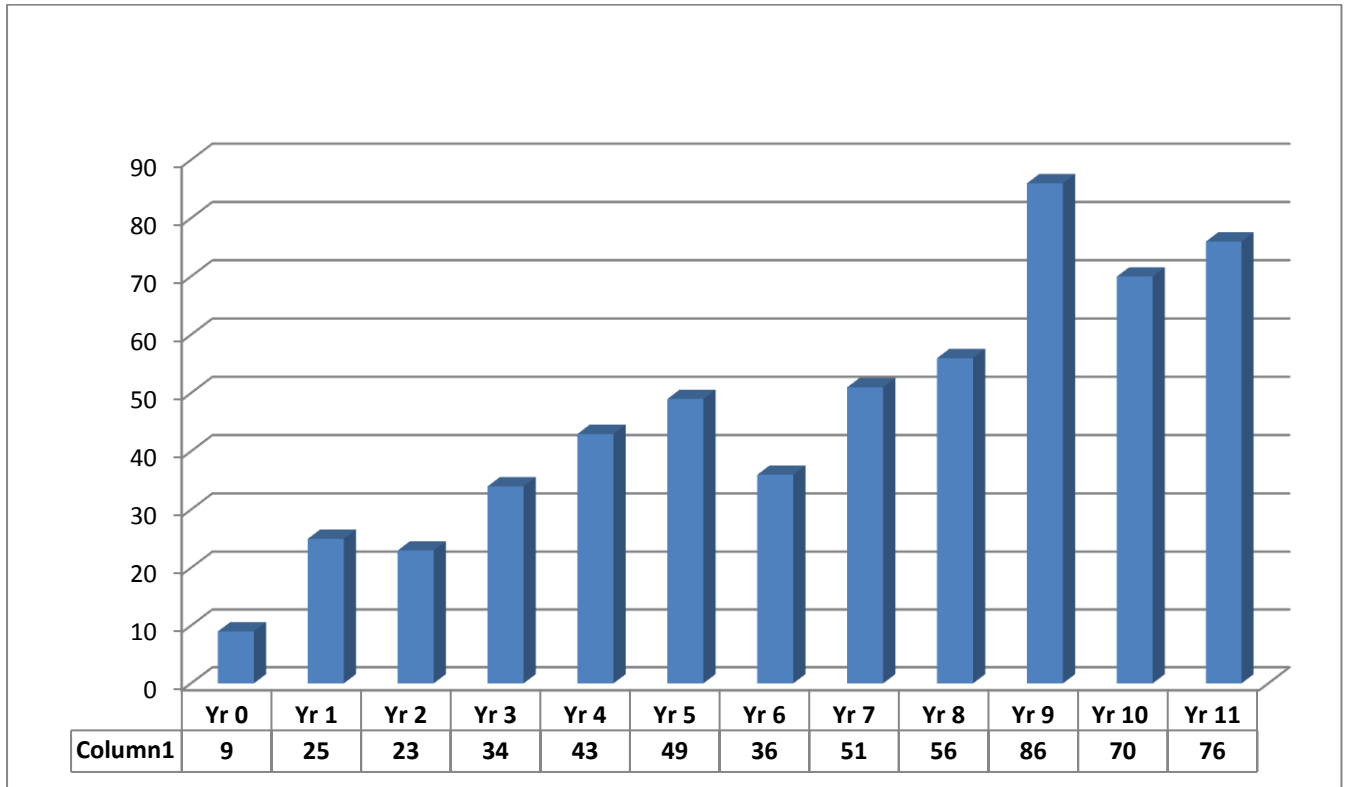
Cases on EHE Register per Academic Year



Cases by Hub 2016/17



Cases by National Curriculum Year



Cases with Statements of special Educational Needs/Education health and Care Plan

Year	Statement/EHCP
2011/12	18
2012/13	16
2013/14	20
2014/15	26
2015/16	28
2016/17	23

Attendance and Exclusion History

	2014/15	2015/16	2016/17
Attendance 90% or less (prior to EHE)	194	165	276
Attendance over 90% (prior to EHE)	68	72	107
No attendance data available	195	226	246
Fixed term exclusions history	24	31	51
Permanent exclusion history	3	3	6

No attendance data available for students attending Oxford Spires, Cheney or outside of the OCC 'umbrella'

Students with Attendance over 90% - 107 (17.01% of EHE students)

Students with Attendance 90% or less - 276 (43.88% of EHE students)

Students with no Attendance data available for school prev. to EHE - 246 (39.11% of EHE students)

Students who have had exclusions (Fixed or Perm) = (8.67% of EHE students)

Cases by Ethnicity

ETHNICITY	2016/17
Indian	1
Any other Asian background	14
Pakistani	12
Black Caribbean	4
Any other mixed background	14
White Asian	8
White/black Caribbean	16
Info not yet obtained	17
Not known	60
Any other ethnic group	3
Refused	7
White British	360
White English	3
White Irish	1
Traveller Irish heritage	8
Any other white background	7
Gypsy /Roma	22

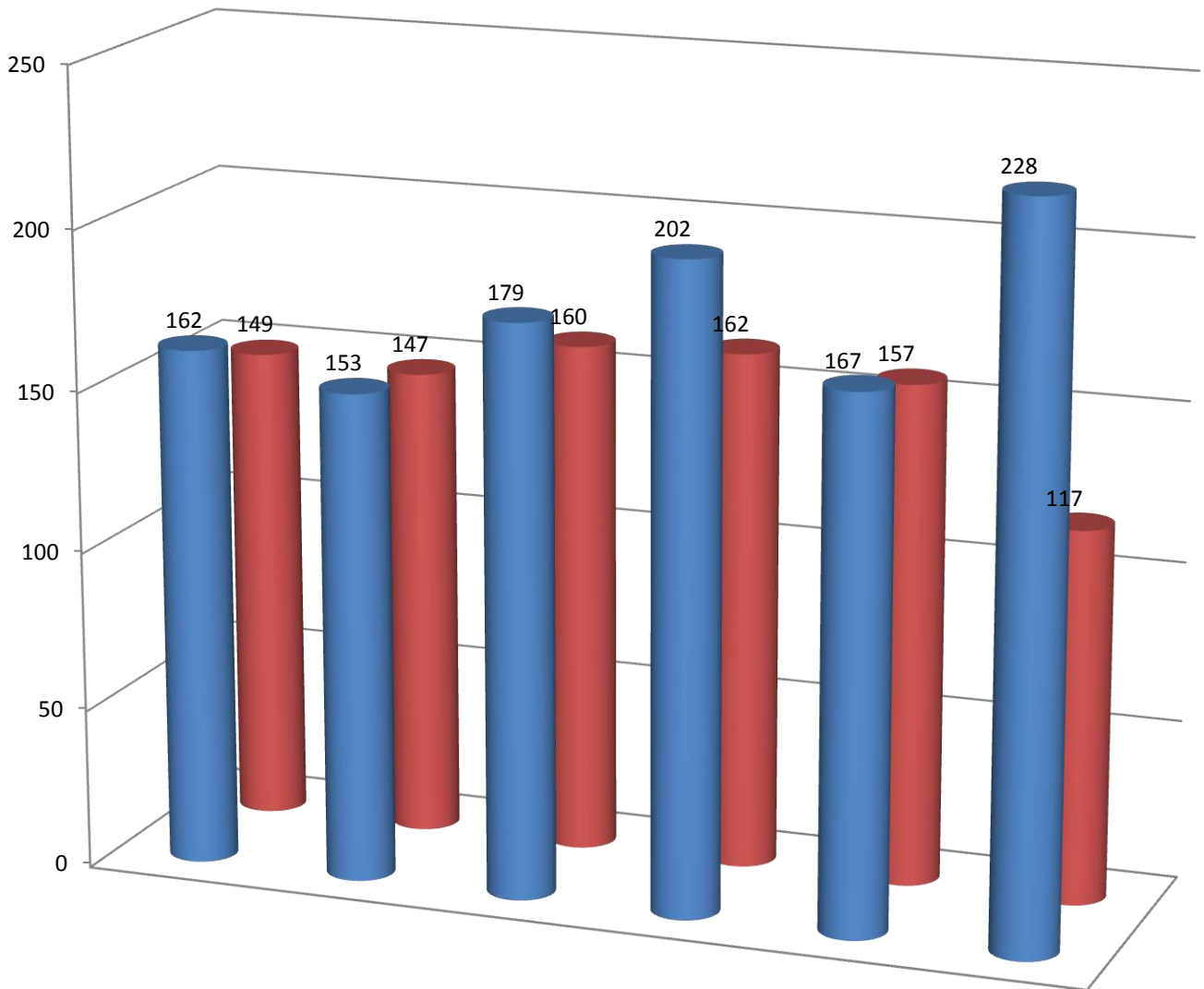
Reasons for Elective Home Education

Reason	Number of cases				
	2012/13	2013/14	2014/15	2015/16	2016/17
Bullying	27	24	22	25	28
Dissatisfaction with system	85	85	62	51	54
Distance/Access to local School	5	13	4	4	6
Other/Unknown	47	64	122	127	249
Parents Desire for Closer Relations	29	27	30	25	29
Philosophical/Ideological beliefs	30	35	35	49	32
Religious/cultural beliefs	56	48	49	55	44
Special Educational Needs	35	42	32	37	30
Short term intervention	48	51	75	60	38
Unwilling/Unable to attend School	16	21	25	27	49

Pre EHE Base Secondary Schools

SCHOOL NAME	AREA	TOTAL
<u>Banbury Academy</u>	Banbury	10
<u>Bartholomew School</u>	Eynsham/Witney	6
<u>Blessed George Napier Catholic School</u>	Banbury	3
<u>Burford School</u>	Burford	4
<u>Carterton Community College</u>	Carterton	4
<u>Cheney School</u>	Headington, Oxford	1
<u>Chiltern Edge School</u>	Sonning Common, Reading	5
<u>Chipping Norton School</u>	Chipping Norton	5
<u>Didcot Girls' School</u>	Didcot	8
<u>Faringdon Community College</u>	Faringdon	8
<u>Fitzharrys School</u>	Abingdon	3

New and Closed Cases



	2011/12	2012/13	2013/14	2014/15	2015/16	2016/17
■ New referrals	162	153	179	202	167	228
■ closed referrals	149	147	160	162	157	117

Wallingford School and Cheney School had the least at one family, whereas The Warriner School had 12, and King Alfred's, John Mason, Gillotts School and Banbury Academy all had 10.

